

Kreuzworträtsel



*Bist du gut
in Mathe?*

$$2x^2(a^1 + b^5) = x^1 + x^2(ab)_c = 8x^4$$

$$d = x^2(x+x^2)ab \div (f-h) = 30^\circ$$

$$f = (x^2) + (2x)dh + abc(2x) = 15^\circ$$

$$h = 2x^2 + (df) \div a + b - c(x)_2 = 45^\circ$$

$$2x(d)(f)(h) = \frac{x^2 - d f h}{2d_2 - f h 2d(x)}$$

Horizontal

- 1 2+8
- 4 3*8
- 6 20-9
- 7 50+50
- 8 7*7
- 12 16-15

Vertikal

- 1 36:6
- 3 12+9
- 5 30-13
- 9 26:2
- 10 2*7
- 11 56:7

The crossword puzzle grid consists of white squares for letters and light blue squares for empty space. The starting points for the words are as follows:

- Horizontal:**
 - 1: Row 4, Column 3
 - 4: Row 5, Column 1
 - 6: Row 6, Column 1
 - 7: Row 7, Column 1
 - 8: Row 8, Column 4
 - 12: Row 9, Column 4
- Vertical:**
 - 1: Row 3, Column 4
 - 2: Row 4, Column 2
 - 3: Row 5, Column 4
 - 5: Row 6, Column 1
 - 9: Row 8, Column 6
 - 10: Row 7, Column 7
 - 11: Row 4, Column 8

+ plus
- minus
* mal
: durch
= ist

Sommerferien



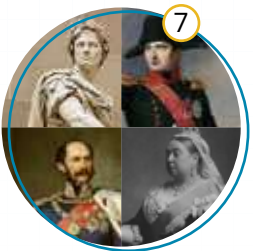
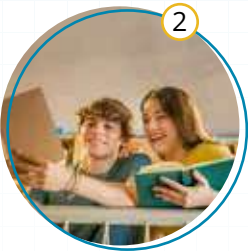
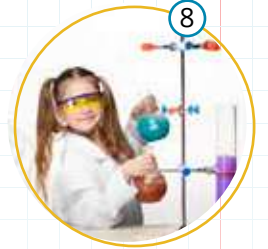
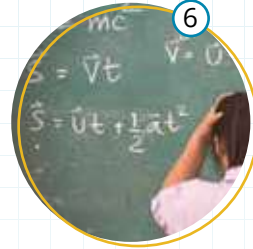
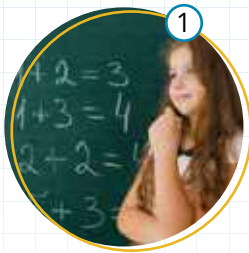
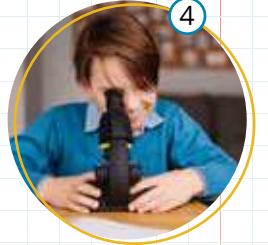
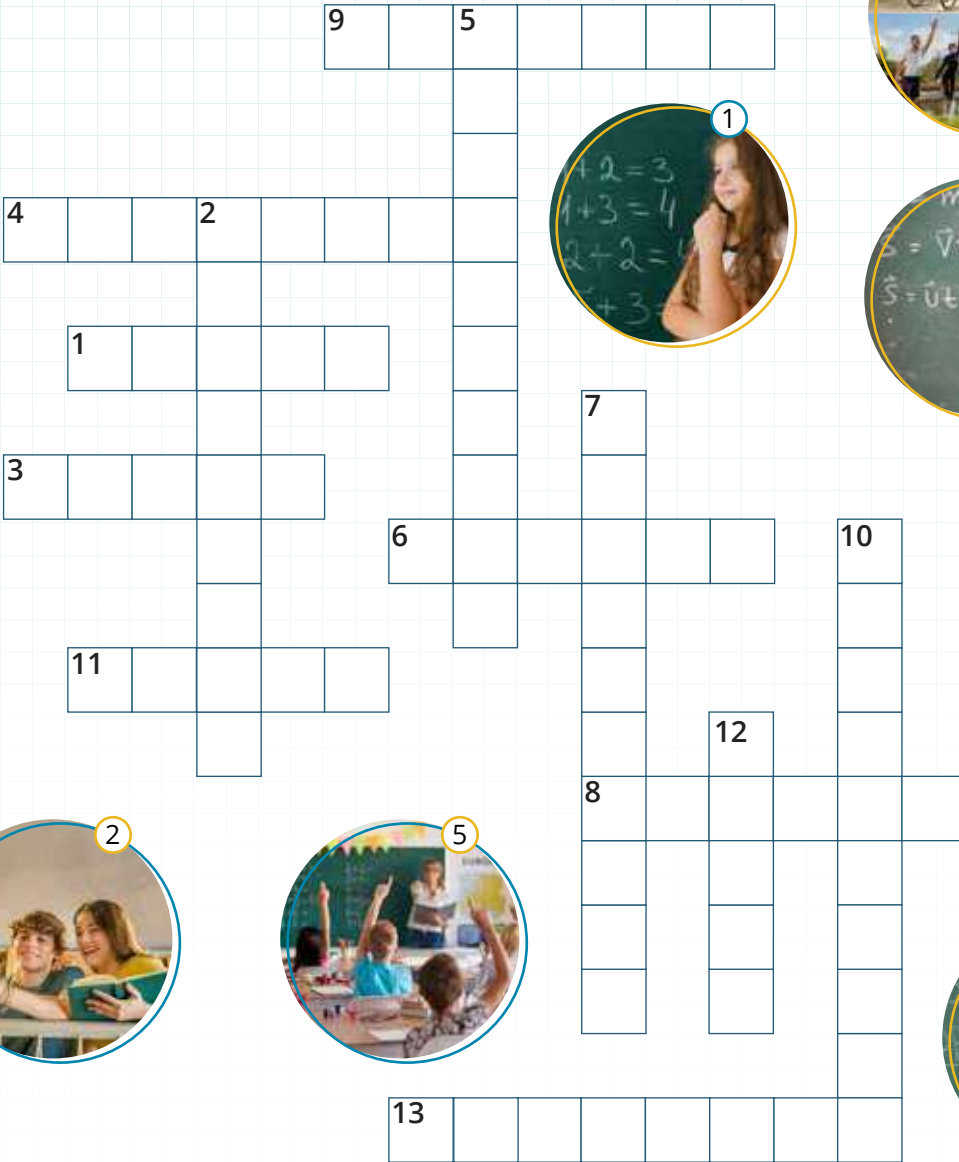
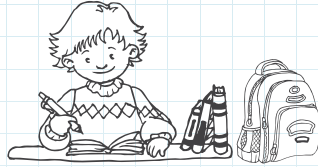
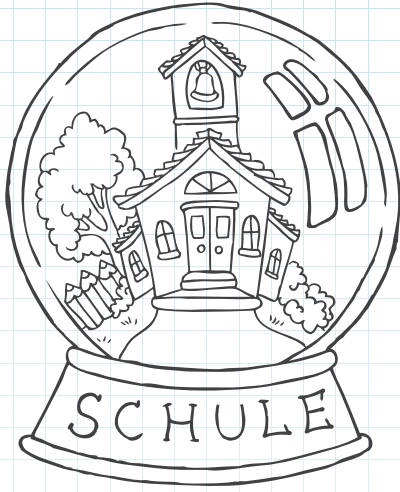
V	R	E	E	M	S	B	A	P	E	S	T	N	S
O	G	S	A	S	O	A	E	C	R	O	A	W	P
L	M	S	U	R	N	D	P	U	N	M	L	A	I
L	N	L	R	E	N	M	I	N	M	M	A	L	E
E	S	S	L	S	E	I	C	T	N	E	I	D	L
Y	T	T	A	M	B	N	K	I	S	R	R	E	E
B	R	P	U	L	D	T	N	L	L	F	B	S	N
A	A	A	B	K	W	O	I	E	L	E	E	S	L
L	N	D	B	L	I	N	C	N	A	R	R	U	E
L	D	B	E	S	T	N	K	P	B	I	G	L	N
N	E	R	E	I	Z	A	P	S	S	E	E	F	S
T	E	N	N	I	S	N	E	N	S	N	E	S	U
N	E	E	B	C	D	M	M	N	U	U	L	A	B
S	N	N	E	S	T	B	F	O	F	A	I	N	S

- Strand
- Wald
- Sommerverein
- Tennis
- Fussball
- Berge
- Badminton
- Meer
- Spazieren
- Sonne
- Volleyball
- Fluss
- Urlaub
- Picknick
- spielen



Kreuzworträtsel

SCHULE HABEN WIR GERN!



Kreuzworträtsel

*Bist du gut
in Mathe?*

$$d = x^2(x+x^2)ab \div (f-h) = 30^\circ$$

$$f = (x^2) + (2x)dh + abc(2x) = 15^\circ$$

$$h = 2x^2 + (df) \div a + b - c(x)_2 = 45^\circ$$

$$2x(d)(f)(h) = \frac{x^2 - d f h}{2d_2 - fh 2d(x)}$$

Horizontal

- 1 2+8
- 4 3*8
- 6 20-9
- 7 50+50
- 8 7*7
- 12 16-15

Vertikal

- 1 36:6
- 3 12+9
- 5 30-13
- 9 26:2
- 10 2*7
- 11 56:7

The crossword puzzle grid is filled with the following words:

- Horizontal:**
 - 1: ZEHN
 - 7: EINHUNDERT
 - 4: VIERUNDZWANZIG
 - 8: NEUNUNDVIERZIG
 - 6: ELF
 - 12: EINS
- Vertical:**
 - 3: DREI
 - 5: DREI
 - 9: ZEHN
 - 10: VIER
 - 11: VIERZIG

+ plus
- minus
* mal
: durch
= ist

Sommerferien



V	R	E	E	M	S	B	A	P	E	S	T	N	S
O	G	S	A	S	O	A	E	C	R	O	A	W	P
L	M	S	U	R	N	D	P	U	N	M	L	A	I
L	N	L	R	E	N	M	I	N	M	M	A	L	E
E	S	S	L	S	E	I	C	T	N	E	I	D	L
Y	T	T	A	M	B	N	K	I	S	R	R	E	E
B	R	P	U	L	D	T	N	L	L	F	B	S	N
A	A	A	B	K	W	O	I	E	L	E	E	S	L
L	N	D	B	L	I	N	C	N	A	R	R	U	E
L	D	B	E	S	T	N	K	P	B	I	G	L	N
N	E	R	E	I	Z	A	P	S	S	E	E	F	S
T	E	N	N	I	S	N	E	N	S	N	E	S	U
N	E	E	B	C	D	M	M	N	U	U	L	A	B
S	N	N	E	S	T	B	F	O	F	A	I	N	S

- Strand
- Wald
- Sommerverein
- Tennis
- Fussball
- Berge
- Badminton
- Meer
- Spazieren
- Sonne
- Volleyball
- Fluss
- Urlaub
- Picknick spielen

